

All Rights Reserved

Materials and specifications are subject to change without notice.
Featured machines in photos may include additional equipment. See your XCMG
dealer for available options.



XCMG

XC6-2506E 
SECURITY, GREEN AND INTELLIGENCE

XCMG
XCMG FOR YOUR SUCCESS



XCMG European Sales and Services GmbH
Address: Europark Fichtenhain B 4,47807 Krefeld, Deutschland
Tel: +49 (0) 2151 8206 890
Fax: +49 (0) 2151 8206 899
E-Mail: info@xcmg-ess.de

XUZHOU CONSTRUCTION MACHINERY GROUP IMP. & EXP. CO., LTD
Address: No.1, Tuolanshan Road, Xuzhou Economic Developing Zone, Jiangsu,
China 221004
Tel: + 86(0) 516 8773 9703
Fax: + 86(0) 516 8773 9230
E-Mail: europe@xcmg.com

www.xcmg.com

Rated operating load: 2500kg
Maximum lifting height: 6000mm
Maximum traction: ≥ 24.5 kN





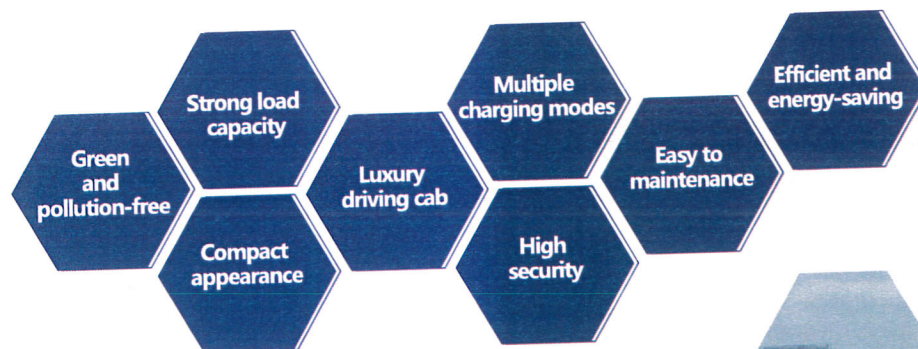
New energy - electric telehandler

XC6-2506E telescopic forklift loader is a light-weight compact electric telescopic forklift product independently developed and designed by XCMG to break into the European and American high-end markets. In combination with the electrification trend of engineering machinery throughout the world, it integrates the mature domestic electric drive technologies and the cost advantage of core components. With compact structure, flexible operation, sensitive action, zero emission and low noise, this product is applicable to the operation in places having relatively high requirements on pollutant emission and noise, such as enclosed space, livestock shed, vegetable processing plant, hospital, school or downtown area.

Safe, green and intelligent, XCMG's XC6-2506E leads the new trend of the industry!



XC6-2506E Advantageous performance

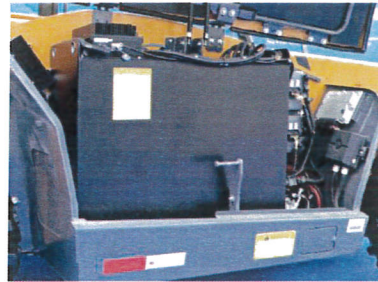


1. Clean energy

Zero emission and pollution: Green, environment-friendly, make great contribution to improving air quality; Low noise: Mainly oriented to the construction and agriculture markets, especially the places having relatively high requirements on pollutant emission and noise.

2. Dual-motor drive system

High-power dual-motor drive system is used, Powerful and fast.



3. Compact structure, good trafficability

Width and height of the machine are less than 2m, so it can pass special narrow spaces like low door, narrow passage, underground parking lot, etc; it also has small turning radius and good trafficability.

4. Large load bearing capacity, wide operating range

When fork is configured, the maximum operating height is 6m, the maximum reach distance is 3.4m, the rated operating load is 2.5t, the bearing capacity at maximum reach distance is 0.9t, and the bearing capacity at maximum operating height is 2t; therefore, the operating capacity is better than similar products.

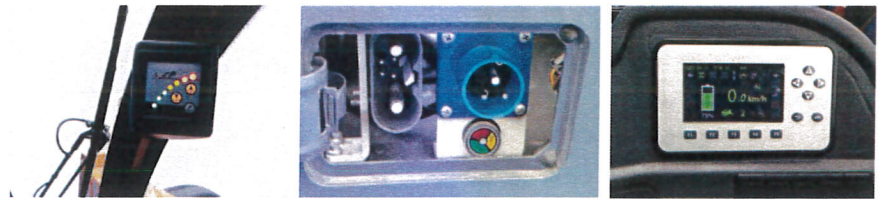


5. Cab and control system

Luxurious and comfortable cab with 930mm width, Lower hinge point of arm carrier, wide vision, Air conditioner, ventilation system, multi-window stereoscopic air supply in the cab to meet the operator's cooling and heating requirements. Seat and direction can be adjusted at will; radio, cigarette lighter, electric can, emergency hammer, fire extinguisher, non-slip mat, front and rear windscreen wipers are provided; front and rear glasses are provided with defrosting function; cab is fully sealed; the design principle of "people first" throughout the machine provides the operator a safe and comfortable operating environment.

6. Torque limiter system

The system is composed of weight sensor and control display. When the machine is about to be fully loaded, the system will remind the operator with red indicator; when the machine is overloaded, the system will cut off relevant pilot oil circuits to limit the extension and falling of the arm. With stable and reliable performance, the system can effectively prevent the machine from tipping over.



7. Multiple charging modes

The XC6-2506E is equipped with high-power dual-motor drive system, It's equipped with an 80V412AH lithium battery and lasts for 6-8 hours. It's equipped with a car-mounted charger as standard, and an optional international REMA fast charge, which can be charged in 2 hours. It can be said to be the real king of performance.

8. Multiple usage models

There are two walking gears, fast and slow, and three working device gears: fast, medium and slow. Customers can adjust various speeds according to their needs, which is more energy-saving.

9. Maintainability

The large side door and up-turning engine hood is used, which can completely expose the battery control system, air conditioner system, fuse box and alike for easier inspection, maintenance and repair.

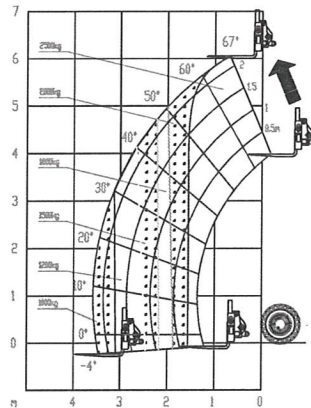
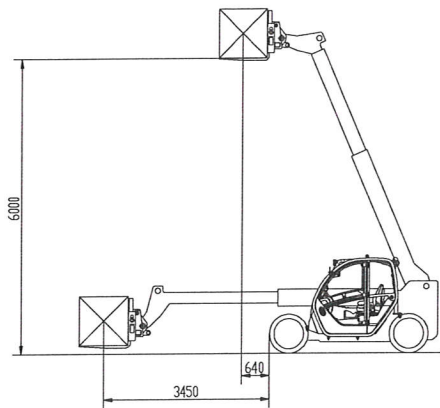
10. Multi-purpose

TXC6-2506E telescopic forklift loader can be equipped with different work devices like scrapper pan, operation platform, clamp, etc. to meet different operation requirements.



■ Main technical parameters of XC6-2506E telescopic forklift loader

S/N	Item name	Parameter value
1	Rated operating load	2500 kg
2	Operating mass	5360 kg
3	Maximum lifting height (to upper plane of fork)	6000 mm
4	Effective load at the maximum lifting height	2500 kg
5	最大起升高度时的前伸距	640 mm
6	Maximum reach distance (arm level, load center to front end of tire)	3450 mm
7	Effective load at the maximum reach distance	1000 kg
8	Load center distance	500 mm
9	Braking distance	≤5.6 m
10	Minimum ground clearance (frame)	255 mm
11	Wheelbase	2450 mm
12	Tread	1620 mm
13	Minimum turning radius (outer side of tire)	≤3330 mm
	Luffing time (rising)	≤9.5 s
	Luffing time (falling)	≤4.2 s
	Second arm stretching-out time	≤8.2 s
14	Work device	Second arm retracting time ≤4.3 s
	Fork arm carrier forward tilting time	≤3.5 s
	Fork arm carrier backward tilting time	≤2.6 s
15	Telescopic arm luffing angle	-4° ~ 67°
16	Range of inclination angle of fork arm carrier (arm level)	-12° ~ 114°
17	Maximum speed	15.5km/h
	Type	Lithium battery
18	Battery	Voltage 80 V
	Capacity	412 Ah
19	Tire specification	12-16.5
20	Overall dimension of complete machine, mm	Length 4100 × width 1920 × height 1920, mm



■ The main functions are as follows

S/N	Function	Description
1	4WD	Four-wheel drive
2	Three steering modes	Two-wheel, four-wheel or crab steering, flexible driving, small turning radius
3	Locked front axle, floating rear axle	Front axle is fixed on the frame, rear axle can float within the range of ±10°, which ensures the safety and toe place adaptability of the completed machine
4	Torque limiter automatic limiting system	Overload alarm is provided to prevent the arm from acting in more dangerous direction, thus the safety is higher.
5	Ergonomic ROPS and FOPS cab	FOPS and ROPS certified cab; Electric drive handle operating all actions with one hand, air conditioner, ventilation system, and front + right + rear defrosting, improve the driver comfort and make the design more humanized
6	Intelligent braking system	(1) Parking brake is released automatically after shifting the gear and pressing the accelerator pedal; (2) Parking brake is triggered automatically in 5s after the driver leaves the seat; (3) After the machine is shut down, the parking brake is applied automatically to disconnect the walking system, for the purpose of higher safety.
7	Moving arm safety lock is provided	When the moving arm needs to be lifted during maintenance or alike, the moving arm safety lock can prevent the arm from falling, which makes the workers safer
8	Main switch of electrical system	The switch of electrical system can be disconnected in case of a long idle time, so as to prevent the battery from power loss and damage
9	Fully sealed waterproof connectors	Electrical components are more reliable, with IP65 protection rating
10	Various charging modes	The standard on-board charger can fully charge the battery in 8-10h, and the optional international standard REMA quick charger can fully charge the battery in 2 hours.
11	Pedal brake energy recovery function	Energy is recovered automatically when releasing the accelerator pedal, so as to increase the operating hours of the machine
12	Multiple operation modes	Eco: Low energy consumption, save energy resource, slightly reduce the operation performance of machine; Power: Optimal performance, selected when it is necessary to use the telescopic arm or the maximum gear of gearbox
13	LCD control panel	It displays information like steering mode, battery capacity, alarm, walking speed, etc.
14	Handle lock	The function can be triggered by pressing the button or triggered automatically after the driver leaves the seat, in order to prevent misoperation
15	Tipping bucket lock	It ensures that the bucket will not be tipped automatically during walking, for the purpose of higher safety.

